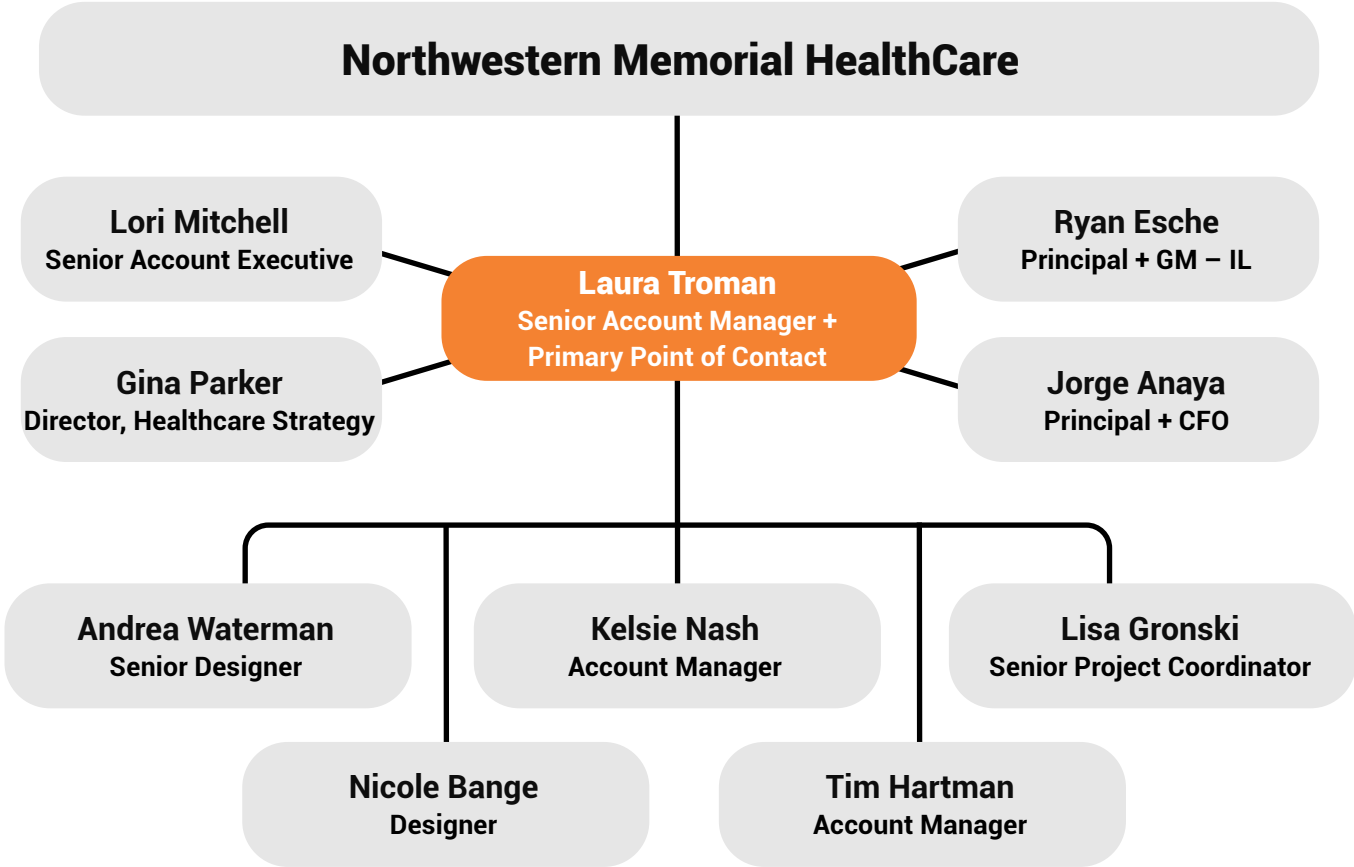


# Collaborative Team Approach

As a part of your core team, Henricksen will take a collaborative approach to maximize value and provide you with the best solutions to meet both your business and people goals for this project. Following the completion of your project, Henricksen will remain accountable to Northwestern Memorial HealthCare in order to maximize your furniture investment. Your dedicated team will provide a range of Day 2 services not limited to user training, maintenance, reconfigurations, and additional furniture purchases.



Your dedicated project team has successfully completed the following recent healthcare projects together :

- NMH Lake Forest: 1000 N Westmoreland, Lake Forest, IL
- Lurie Children's Skokie Clinic: 3722 W Touhy Ave, Skokie, IL
- NMH Lavin 14th Floor Spine Center: 259 E. Erie, 14th Floor
- NMH Evanston: 1630 Sherman Ave, Skokie, IL
- NMH Oak Brook: 1001 Commerce Drive, Oak Brook, IL 60523

# Dedicated Project Team

Henricksen has the bench strength, expertise, and network to support you through projects of any size or scope.

Our dedicated and resourceful team of contract furniture professionals will hone in on the best solutions for you while ensuring an exceptional experience.



**Laura Troman**

**Primary Point of Contact**  
**Senior Account Manager**  
l.troman@henricksen.com

**About**  
Laura will serve as the dedicated Account Manager for the AMC Tower project, overseeing internal coordination across order entry, shipping, receiving logistics, delivery, and installation. She will help keep the furniture process organized and moving by coordinating with Henricksen's internal teams and supporting the flow of information from procurement through installation.

**Relevant Experience + Qualifications**  
Laura works exclusively on healthcare projects and brings practical knowledge to projects of many sizes, from ground-up hospitals and new outpatient clinics to day-to-day client requests. She works closely with an internal support team that includes an account executive, project coordinator, and designer, using each resource to keep projects organized and responsive to client needs. Laura has also held LEED Green Associate credentials, giving her useful sustainability knowledge for clients pursuing LEED-certified buildings.



**Lori Mitchell**

**Senior Account Executive**  
l.mitchell@henricksen.com

**About**  
Lori will serve as a dedicated point of contact for the AMC Tower furniture scope, supporting project development, implementation, and execution. She will help coordinate communication between NMHC, the project team, internal Henricksen resources, and manufacturer partners so the work stays organized, responsive, and aligned with the overall project goals.

**Relevant Experience + Qualifications**  
Lori brings 35 years of healthcare experience, including 10 years as a healthcare designer and 25 years developing healthcare accounts. Her background includes hospital project management, healthcare account leadership, product knowledge, vendor coordination, and client support. Lori stays closely connected to current healthcare design trends, with a focus on patient comfort and safety, caregiver comfort and safety, and product solutions that support both hospital and outpatient clinic environments. She also works closely with vendors developing new healthcare products, helping bring current product knowledge and practical recommendations to the AMC Tower team.

# Dedicated Project Team



**Gina Parker**

**Director, Healthcare Strategy**  
g.parker@henricksen.com

**About**

Gina will support the AMC Tower team as Director of Healthcare Strategy, bringing a healthcare-focused perspective to planning, product conversations, and client alignment. Her role is to help connect the furniture process to the realities of healthcare environments, including patient dignity, staff well-being, operational needs, and long-term performance.

**Relevant Experience + Qualifications**

Gina brings more than 15 years of experience across healthcare interiors, project management, design strategy, and client partnerships. She began her career in hospital environments, documenting and analyzing space utilization for major health systems, which gave her a practical understanding of how space impacts both patient and staff experiences. She later spent 14 years in the contract furniture industry in dealer and manufacturer roles, leading healthcare growth initiatives and supporting strategic partnerships. As Director of Healthcare Strategy at Henricksen and an NCIDQ-certified professional, Gina helps strengthen healthcare solutions across markets with a focus on dignity, healing, staff support, and operational excellence.



**Jorge Anaya**

**Principal, Vice President + Chief Financial Officer**  
j.anaya@henricksen.com

**About**

Jorge will support the AMC Tower project as Executive Sponsor, providing financial leadership around budgeting, forecasting, purchasing strategy, and value alignment.

**Relevant Experience + Qualifications**

Jorge brings deep financial leadership experience across the furniture, dealer, and manufacturing sectors. At Henricksen, he has held leadership roles in finance and now serves as Principal, Vice President, and Chief Financial Officer. His background also includes nearly 10 years with Allsteel in finance, dealer development, and owned-dealer leadership, along with prior finance roles at Omni Workspace and HNI Corporation. For the AMC Tower, Jorge's experience will help support responsible fiscal oversight, purchasing strategy, manufacturer relationships, and value-focused decision-making throughout the project.



# Dedicated Project Team



**Ryan Esche**

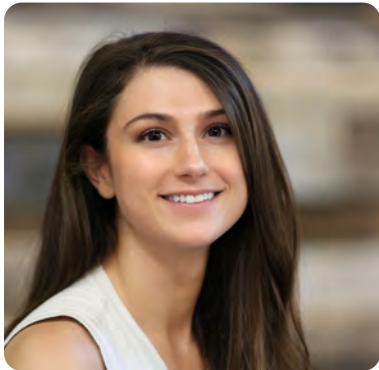
**Principal + General Manager – IL**  
r.esche@henricksen.com

**About**

Ryan will provide executive leadership and direction for the AMC Tower project, supporting operations, client relationships, resource alignment, and overall project delivery. As Principal and General Manager of Henricksen’s Illinois office, he will help ensure the right teams are connected, communication remains clear, and the project is supported with the attention, accountability, and leadership it requires.

**Relevant Experience + Qualifications**

Ryan brings more than 25 years of experience in the commercial real estate and contract furniture industries, with a strong background in business development, strategic planning, manufacturer relationships, and client partnerships. Since joining Henricksen in 2018, he has supported planning, strategy, brand innovation, and growth initiatives across the company, while helping strengthen Henricksen’s presence in the Chicagoland market. His leadership experience includes senior roles with Henricksen, HNI, Allsteel, Knoll, and Grubb & Ellis, giving him a broad understanding of workplace strategy, product solutions, service models, and large-client support. For the AMC Tower, Ryan’s role is especially important in keeping internal resources aligned and ensuring NMHC has executive-level support throughout the project.



**Kelsie Nash**

**Account Manager**  
k.nash@henricksen.com

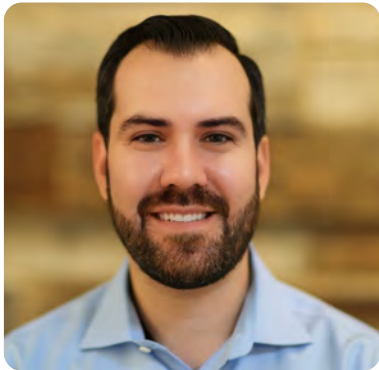
**About**

Kelsie will support the AMC Tower project as Account Manager, working with Lori Mitchell and Laura Troman to coordinate project activity, client communication, and internal follow-through.

**Relevant Experience + Qualifications**

Kelsie brings more than 11 years of experience at Henricksen, including roles as Project Manager, Account Manager, and Senior Account Manager. Her background gives her a strong understanding of project coordination, client support, internal processes, and the details required to move furniture projects from planning through delivery. For the AMC Tower, Kelsie’s experience will help support organized communication, responsive account management, and steady coordination across the project team.

# Dedicated Project Team



**Tim Hartman**

**Account Manager**  
t.hartman@henricksen.com

**About**

Tim will support the AMC Tower project as Account Manager, helping Lori Mitchell and Laura Troman coordinate project activity, client communication, and internal follow-through.

**Relevant Experience + Qualifications**

Tim brings nearly 14 years of experience at Henricksen, including more than six years as an Account Manager. His background also includes marketing coordination and marketing assistant roles within the company, giving him a broad understanding of Henricksen's clients, internal processes, communication standards, and project support structure. For the AMC Tower, Tim's experience will help provide steady account support, organized communication, and reliable coordination across the project team.



**Andrea Waterman, NCIDQ**

**Senior Designer**  
a.waterman@henricksen.com

**About**

Andrea will support the AMC Tower project as the Primary Designer, helping lead drawings, renderings, and specifications that align with NMHC's project requirements and support clear stakeholder review.

**Relevant Experience + Qualifications**

Andrea is an NCIDQ-certified interior designer with more than 15 years of experience in commercial interior design, furniture planning, specifications, presentations, renderings, and project coordination. Her background includes senior design roles at Henricksen and Forward Space, along with previous interior design experience in architecture and corporate interiors. For the AMC Tower, Andrea's experience will help support accurate documentation, thoughtful furniture planning, and design solutions that respond to both project requirements and end-user needs.

# Dedicated Project Team



Nicole Bange

**Designer**  
n.bange@henricksen.com

**About**  
Nicole will support the AMC Tower project as a Designer, helping develop drawings, renderings, and specifications that align with NMHC's project requirements and support clear stakeholder review.

**Relevant Experience + Qualifications**  
Nicole brings more than 20 years of design experience, including her current role as Senior Designer at Henricksen and previous design experience with OM Workspace. Her background includes furniture planning, design documentation, renderings, specifications, and coordination with project teams and stakeholders. For the AMC Tower, Nicole's experience will help support accurate documentation, thoughtful furniture planning, and clear visual communication throughout the design and specification process.



Lisa Gronski

**Senior Project Coordinator**  
l.gronski@henricksen.com

**About**  
Lisa will support the AMC Tower project through quote and order entry, order management, and customer support. She will serve as the dedicated customer service contact for the project, helping provide status updates, reporting, and day-to-day support while coordinating with the broader Henricksen team as needed.

**Relevant Experience + Qualifications**  
Lisa brings 30 years of industry experience and a strong understanding of pricing proposals, vendor coordination, contract management, and project support. She has built long-standing relationships with vendors and is known for keeping information organized, communicating clearly, and helping tasks move forward efficiently. Her experience in strategic planning, problem-solving, and multi-tasking will be valuable for a project like the AMC Tower, where accurate order management, timely reporting, and dependable follow-through will be critical.